



10 Head Fill by Weight Clamshell Filler



blueberries



grape tomatoes



cherries

touch screen monitor
high speed capacity
accuracy & handling

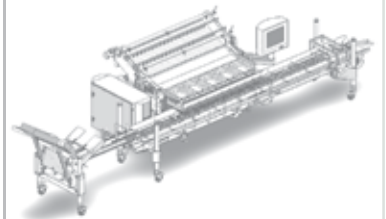
FRESHTRACKER™ compatible

Manufactured by BBC Technologies Ltd



10 Head Fill by Weight Clamshell Filler

Historically the North American domestic market has permitted volume-based sales. The international market and some domestic markets are now requiring weight based sales. Volume fillers are quick and simple however BBC Technologies believes that high-speed weight based fillers are the way to the future. The BBC 10 head Fill By Weight (FBW) Clamshell Filler provides an efficient and automated method of denesting, filling and lid closing of product into clamshells.



For further information please view our website www.bbctechnologies.com or contact our staff at the following locations:

EASTERN REGIONAL OFFICE

Butch Greiffendorf
1201 Kalamazoo Street
South Haven, MI 49090, USA
ph/fax +1 269 639 8820
cell +1 269 491 9124

WESTERN REGIONAL OFFICE

Paul Birchall
5757 E Clinton Avenue,
Unit 112, Fresno
California 93727, USA
ph +1 720 771 6325
fax +1 559 292 7488

NEW ZEALAND OFFICE

Geoff Furniss
397 Jary Road,
RD1 Ohaupo, NZ
ph +64 (0) 7 823 6927
fax +64 (0) 7 823 6925

EUROPEAN OFFICE

Arvi Crossland
Vaga Tula, Kärstna Side,
Viljandimaa, Estonia
ph +37 253 625 807

Design

The 10 head FBW clamshell filler is suitable for packing clamshells of such small fruit types such as blueberries, cherries, grape tomatoes and cherry tomatoes. With innovate features including *automated infeed spreader* and *alternated step progression* clamshell fills, the FBW is able to accurately pack clamshells at high-speeds of up to **120 clamshells per minute***.

Handling

A great deal of consideration has been taking into the handling of fruit and preservation of product surface. Minimal elevation transitions along with anti-bruise surfaces ensure that fruit bloom is kept intact.

Versatility

The FBW is able to fill any clamshell size from 4.4 oz up to 2.75 lb. Change over of clamshell types is simple and efficient - easily adjustable flights and guides mean no tools are required and the machine is ready to run again in less than five minutes. The FBW can also be converted from left to right hand orientation to fit with any future line alterations.

User Interface

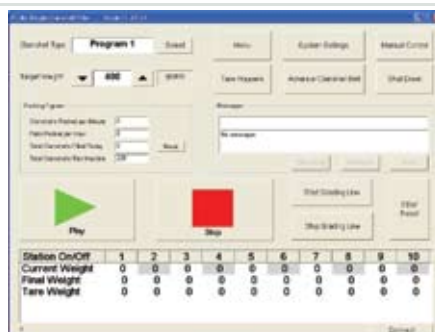
The user interface has been designed with simplicity in mind. Using a touch screen monitor the user can easily change items such as clamshell type and target weight with the touch of a button.

Cleaning

The machine is built in stainless steel and particular care has been taken in design and construction to ensure the machine can be cleaned easily. A manual control function on the user interface enables all parts to run independently for cleaning.

WARRANTIES & SUPPORT

- Software upgrades and support is provided free of charge for the first twelve months.
- An extensive training manual is also provided.



* Subject to Clamshell